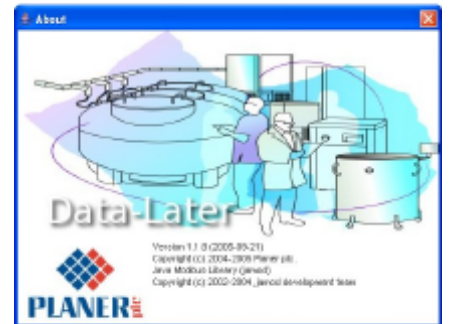


Assure24seven web-based monitoring

Data-Later - budget solutions for data-logging and monitoring

- Web-based products
- Remote access
- 99 measurement points
- Temp, level, CO₂ etc
- Email & mobile notifications
- Emailed reports
- CFR 21 Part 11 compliance



Assure24seven

The Assure24seven suite of products, from Planer, offers users a versatile mix of features and optional capabilities to suit all customer requirements and budgets.

Products are 'web-based' which means that information can be accessed from anywhere in the world, by means of 'web-browsers', so no software is required at the point of access.

A very wide range of input parameters such as temperature, level, humidity etc. can be monitored around the clock. Deviations can instigate public alarms or can be set to send notifications to named individuals by email or mobile phone.

Over 1,000 measurement points can be accommodated and the system can start small and be added to, by the user, at any time, without the need of specialists.

A wide variety of standard reports is available, incorporating both tabular and graphical data, and custom reports are easily created, again, by the user, without need of specialist help.

Data is locked away forever in a secure tamper-proof store and 'digitally-signed documents' and secure, password protected, log-ins ensure that systems comfortably meet the requirements of CFR 21 Part 11 security regulations.

Data-Later

For users with high-value samples who need a low-cost, secure data-logging capability, Data-Later offers a unique combination of features.

Data is logged at, user-defined, periodic intervals, from up to 99 measurement points, in secure files, which can be automatically backed-up and archived.

The data record provides traceable evidence that samples have been held at safe temperatures throughout their life, and gives instant alarm notification should parameters move outside agreed tolerances.

Alarm notifications can be made by email directly to the user's desktop PC, or to PDA, Blackberry or other remote device. Intuitive, and easy to use, Data-Later also provides Internet access to the information held by means of free, client-installed software.

Customised reports are easily produced, on-demand, either locally or remotely and data is easily exported for graphical analysis within MS Excel, or similar spreadsheets.

Data-Later provides an instant, colour-coded, on-screen indication of the status of each device and works on any platform - Windows, Mac or Linux.

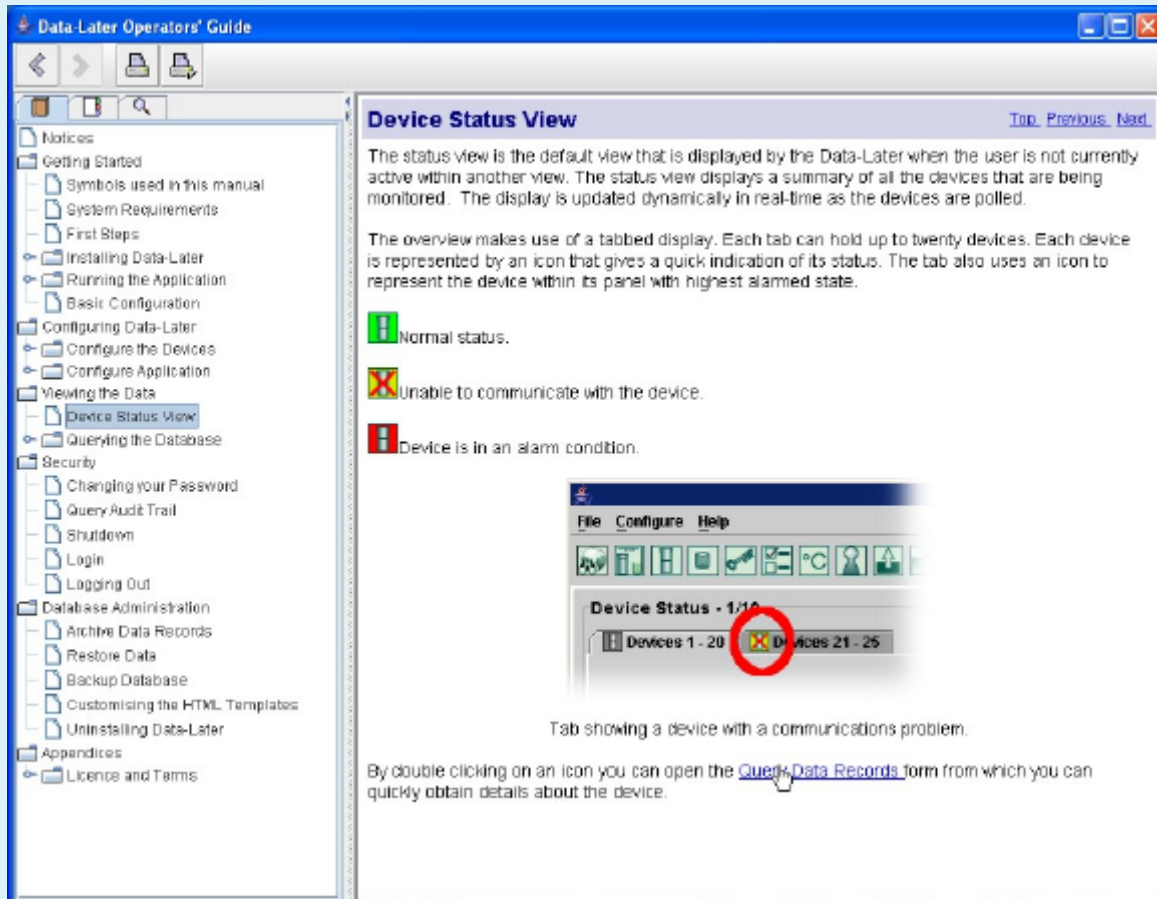
Data-Later Features

- Low-cost, secure data repository for high-value storage applications
- Internet access by means of installed client software
- Colour-coded vessel status icon provides instant identification
- Multiple level access control - according to user role and authority
- Alarm notification by email directly to your desktop or PDA
- Up to 99 measurement points from sources including,
 - Temperature
 - Level
 - Humidity
 - Oxygen level
 - Carbon dioxide level
 - Ph
 - Doors and lids etc.
- Optional Kryo-Watchdog module provides visual alarm indication even if software, network or power failure.
- Built-in automatic back-up and manual archiving for high security
- Exported data may be analysed easily using MS Excel or similar

Assure24seven web-based monitoring

Data-Later - budget solutions for data-logging and monitoring

Data-Later is a low-cost software package which provides exceptional reliability, with automatic backup and archiving features. Set-up and configuration is largely intuitive and on-screen help guides give clear, well illustrated instructions.



System Requirements:

- 10 base T Ethernet connection
- 32Mb RAM minimum. Recommended minimum of 48Mb
- 110Mb of free hard disk space.
- Java 2 Runtime Environment (JRE), Standard Edition version 1.4.2
- Windows 95 SP1, 98SE, NT4+SP5, ME, 2000+SP2, XPHome or Professional, Linux i586 and 100% compatible systems.
- CD Drive.

Options:

- Kryo-Watchdog - Provides an alarm in the event of software, network or power failure.
- GSM Modem - provides independent operation of SMS text messaging to mobile telephones.
- Wireless Access Point - IEEE 802.11g Network Access Point provides local WiFi Wireless connections for PDA.

Planer plc, Windmill Road, Sunbury, Middlesex, TW16 7HD, United Kingdom.

Tel: +44(0)1932 755000 Fax: +44(0)1932 755001 email: sales@planer.co.uk website: www.planer.co.uk

Planer reserves the right to change specifications without notice. All third party trademarks acknowledged. © 2006 Planer plc